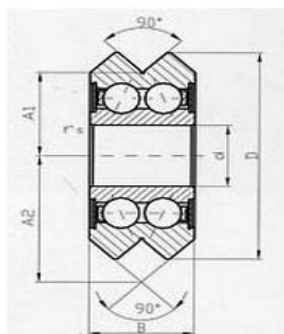
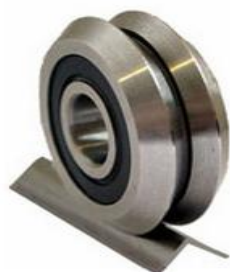


WXX Hornyos vezető csapágy

2017.



BEARING	Weight (g)	d (mm)	D (mm)	B (mm)	A1 (mm)	A2 (mm)	rs (mm)	Radial Load (kN)	Axial Load (kN)
W1X	11	4.763	19.56	7.87	7.93	11.86	0.3	1.0	0.2
W2X	38	9.525	30.73	11.1	12.7	18.24	0.3	2.5	0.5
W3X	130	12	45.72	15.88	19.05	26.98	0.6	4.9	1.5

A megadott méretek változtatás jogát fenntartjuk.

